



COOL COMPONENTS
INCORPORATED
www.coolcomponents.com

Cooling Products for Today's Audio Video Systems

Spring 2009

The 'Cooling Products' in our line are generally for cooling individual components. Protecting individual components is the first step in protecting the system as a whole.

Econo-Cooler CP-EC

This unit has been designed as an affordable solution for a variety of applications. While affordable and very compact, this is a high quality unit and can be used in a variety of applications. It can simply be set on top of a component or the best application is to attached it the side of the component if vent slots are present. With a little creativity this unit can be used in a multitude of applications.



Single & Dual Fan Cooling Units

CP-SF & CP-DF



These units are ideal for easily cooling components such as cable & satellite receivers, game boxes, amplifiers and receivers. They are easily installed by simply placing the unit on top of a component and at just over an inch in height, they are very compact and easy to fit into even the tightest of spaces. Use the Single Fan Unit for smaller components and the Dual Fan Unit on amplifiers and receivers.

Component Unit CP-CC (2FN, 4FN, FL)

This is a very aggressive and full size cooling unit (same size as components). There are three versions: the 2 fan version, the 4 fan and the fully loaded for more extreme situations. All versions are built with special mounts which eliminate noise caused by normal fan vibrations.



Fans / Airflow Can be Reversed!!!
*** RACK MOUNTABLE ***

All versions are ideal for directly cooling amplifiers and receivers installed in cabinetry or rack systems.

Universal Coolers

CP-UC & CP-UC-2

The uses of these units are vast! They can be installed in a rack to pull air into, or out of, the rack, or as a spot cooler for components either above or below where they are installed.

The smaller version can also be mounted in the back of a cabinet to push air up and over the components or mounted behind a recessed TV to increase the natural convection flow of air. Both units are constructed of heavy gauge steel. The smaller version features six 50mm fans and the larger has four 92mm fans.



All Purpose Unit - Recessed TVs, Cabinets, Racks!!!
Fans / Airflow Can be Reversed!!!
*** RACK MOUNTABLE ***

Side Coolers

RK-SC-2FN & RK-SC-4FN



New & Innovative Products for the Most Demanding Rack Applications!

These units are ideal for tight rack applications where no space exists for more traditional cooling products. Even if there is space, these are great for directly cooling components in open 2 or 4-rail rack applications. The units easily attach to the side of the rails and can be positioned where cooling is needed the most. The fans can also be easily reversed so you can direct air to blow directly over the components or pull hot air away from the equipment. In 4-rail racks, the units can be either mounted to the front or back rail and they can be perfectly positioned to precisely cool even the hottest running components. This product comes in two fan and four fan versions.

Rack Faceplates & Temperature Displays



RF2-1TMP-BLK



RF1-4TMP-BLK



RF1-STD-BLK

Now you can monitor your systems with a variety of Temperature Displays. From a 4 Readout Display for Racks, a 2^{RU} Vented Faceplate with a Readout to a Dual Display for Cabinets! Standard vented rack faceplates are also available in 1^{RU} & 2^{RU}.

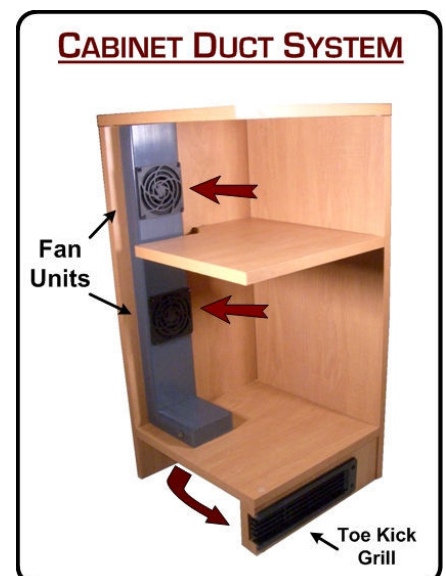
Monitor Your Systems to Prevent Overheating & Extend Life of Equipment!

Cabinet Duct System VS-CDS-SYS1

Exhaust Air Through the Toe Kick !!!

Finally a solution for venting built-in, recessed, or multi-bay cabinetry! This system directly and efficiently pulls air from inside the cabinet and down and out the toe kick. It is fully customizable and will work perfectly where it is difficult, or not aesthetically desirable, to vent through the side or top of a cabinet.

- Affordable Solution for Any Size Project
- Quietly & Aggressively Cools in a Variety of Applications
- Perfect in Tight Spaces
- Uses Variable Voltage Power Supply to Adjust Fan Speed and Also Compatible with Temperature Controllers



Venting Products

for
Cabinets, Closets, and Enclosures

These products are generally for venting systems. Venting involves moving air into, or out of a cabinet, closet or any type of enclosure that houses electronics. Venting is essential for maintaining proper equipment temperatures and longevity.

Cabinet Vent

VS-CV (BLK, WHT, TAN)



Great for venting cabinets or enclosures. This unit is easily installed and is self contained so no tubing or other hassles to contend with. The fan can also be easily reversed to exhaust hot air (default configuration) or force cooler air into a cabinet or enclosure. Also comes in packages for convenience and for more aggressive venting.

Available in Black, White, Tan and in Packages

Airflow Can be Reversed!!!

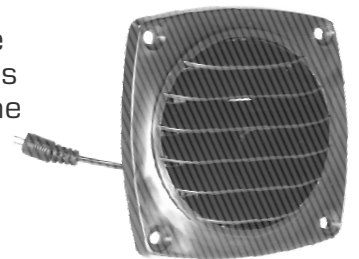
Slim Vent

VS-SV (BLK, WHT)

The Slim Vent is exactly as it's name - very slim and compact and will fit into cabinets and enclosures with tight clearances. It can also be mounted in the door of structured wiring cans to cool the equipment inside, Note: This unit is very similar to the cabinet vent but moves less air when operated silently. The Cabinet Vent is recommended except when space is limited.

Available in Black or White and in Packages

Airflow Can be Reversed!!!



HiFlo Lite Vent

VS-HFL (BLK, WHT, TAN)



This unit fills the gap between the Cabinet Vent and the HiFlo System and is intended for aggressively cooling cabinets. It can also be used to cool equipment closets in less demanding situations where the HiFlo System would not be appropriate or is not in the budget. This unit is easily installed and provides a very pleasing and finished look.

Available in Black, White, Tan, and Wood Grills
Rough-In Boxes Available

Airflow Can be Reversed!!!

HiFlo Vent System

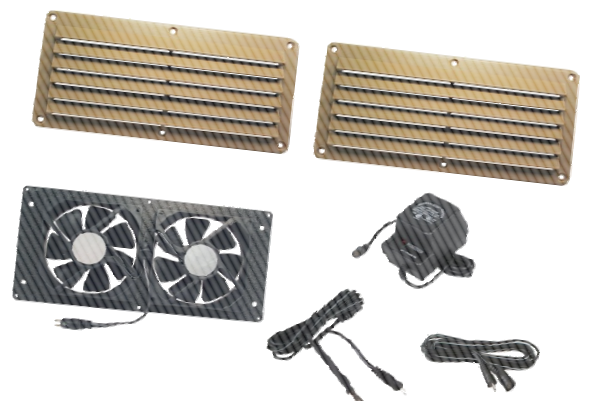
VS-HFB & VS-HFS (BLK, WHT, TAN)

For aggressively circulating a significant amount of air in rooms, closets, or large entertainment systems!

The Basic Unit (HSB) is for venting larger cabinets and the Vent System (HSF) is for venting rooms or closets. The basic system includes a Fan Unit and Grill while the 'system' includes the Fan Unit, 2 Grills, Basic Temp Controller, Power Supply & Extension Cable.

Available with Black Grills, White Grills, Tan Grills, and Wood Grills
Rough-In Boxes Available

Airflow Can be Reversed!!!



Cabinet Toe Kick Vent System

VS-CTK

This system is for installation in a cabinet to draw cooler air into a cabinet from the toe kick. The Cabinet Vent installs in the base (very bottom) of the cabinet and the rectangular grill in the toe kick to draw cool into the cabinet quietly, effectively and affordably!



Cooling & Vent Packages

These packages simply add convenience to your design and ordering of products.

Cooling Package 1

PK-CP1-BSC

Includes 1 Single-Fan Unit, 1 Dual-Fan Unit, Power Supply, & Power Y-Cable

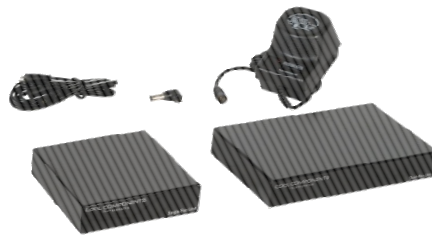


Cabinet Vent Packages

PK-CV1 (BLK, WHT, TAN)

Includes 2 Cabinet Vents, Power Supply, & Power Y-Cable

Available in White, Black & Tan



Cooling Package 2

PK-CP2-PLS

Includes 2 Single-Fan Units, 1 Dual-Fan Unit, 2 Power Supplies, & Power Y-Cable

Temperature Controllers

Temperature based controllers are useful for adding automated control to the cooling and ventilation products. While not necessary for all applications, they can be a great add-on when automated control is desired.

Basic Controller – On/Off Control

TC-BSC 80°F & 88°F

Provides basic on/off control based on temperature
– Two versions with set points of 80 & 88°F



Advanced Temperature Controller

TC-AC

Provides on/off and variable speed control based on temperature. Also features multiple modes for advanced control, an alarm, polarity protection, etc!

Passive Cooling

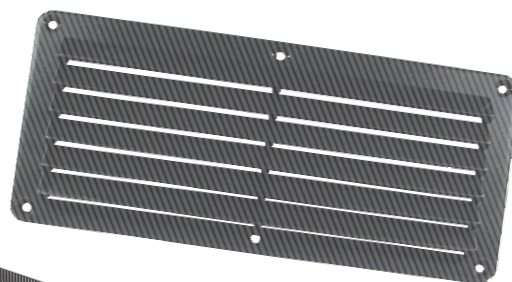
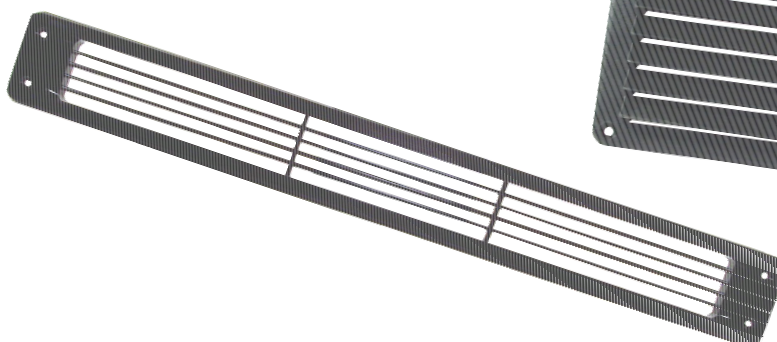
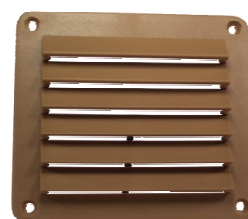
Cooling without a Fan!



Now you can get all of our product grills, and a few others, by themselves for the best passive cooling solutions available. Passive cooling involves simply increasing the natural airflow by adding openings where air can naturally flow in and out. Vents may be mounted high in a cabinet to naturally let warm air escape or lower in a cabinet if drawing air in when using a fan to exhaust air.

Grill Types

- GR-3SM-BLK** - Grill for 3" Round Opening - ABS Surface Mount - Black
- GR-3SM-WHT** - Grill for 3" Round Opening - ABS Surface Mount - White
- GR-3SM-CRM** - Grill for 3" Round Opening - ABS Surface Mount - Chrome
- GR-3IM-BLK** - Grill for 3" Round Opening - ABS Insert Mount - Black
- GR-3IM-WHT** - Grill for 3" Round Opening - ABS Insert Mount - White
- GR-3IM-TAN** - Grill for 3" Round Opening - ABS Insert Mount - Tan
- GR-215-BLK** - Grill for Narrow 2x15.5 Openings - ABS - Black
- GR-215-WHT** - Grill for Narrow 2x15.5 Openings - ABS - White
- GR-45-BLK** - Grill for Rectangular 4x5 Openings - ABS - Black
- GR-45-WHT** - Grill for Rectangular 4x5 Openings - ABS - White
- GR-45-TAN** - Grill for Rectangular 4x5 Openings - ABS - Tan
- GR-410-BLK** - Grill for Rectangular 4x10 Openings - ABS - Black
- GR-410-WHT** - Grill for Rectangular 4x10 Openings - ABS - White
- GR-410-TAN** - Grill for Rectangular 4x10 Openings - ABS - Tan



Wood Grills

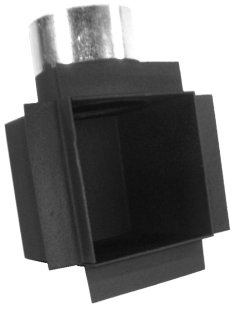


Now our Popular HiFlo, HiFlo Lite, and Toe Kick Systems are available with real wood grills! There is a selection of deep grained oak or a smoother grained maple and these can be stained to match any wood color and type. We are also offering a teak version for boating applications!

Real Wood!!!

- **For HiFlo, HiFlo Lite, & Toe Kick Systems**
- **Available in Maple, Oak & Teak**

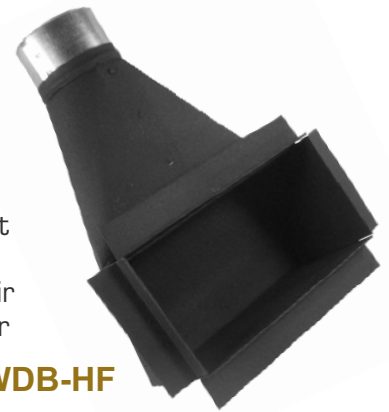
Remote Venting & New Construction



VS-WDB-HFL

Rough-In Boxes for Our Familiar Venting Products

Use these rough-in boxes in your projects to vent warm air from equipment rooms, closets, and even cabinets to other areas in the home. These are great to direct the air from a hot cabinet or closet to a larger room or hallway for the warm air to mix with air in the home or better, work with the HVAC contractor and connect them to the HVAC return system.



VS-WDB-HF

- **Layout cooling systems during construction to drastically reduce installation times**
- **Requires No Special Framing - Boxes Fit within 2x4 Walls**
- **Various Configurations & Tubing Options**

Rough-In Boxes are available for the HiFlo Systems and also the HiFlo Lite and these units will fit inside a 2x4 wall!. All of these boxes are also acoustically treated to eliminate fan echo.

Return Vent System

VS-RVS-ASBY

10 x 10 Powered Return!!

- **Engineered to Efficiently Recirculate Hot Air from Rooms & Closets through the HVAC System or to Another Part of the Home or Office**
- **Uses Rough-In Boxes for Installation During Construction which Makes Final Installation Quick and Easy**
- **Utilizes DC Power System so Electricians are Not Required for the Installation**
- **Very Low Noise with Maximum Effectiveness & Efficiency**
- **Comes with Air Filter for Dust Collection**



Game Console Coolers

CP-PS3, CP-WII, CP-XBOX



Stop Cooking Your Game Boxes!

- **For PS3, Wii, and Xbox 360**
- **Directly Vents & Cools These Traditionally Hot Running Components**

We now offer cooling units for venting PS3, Wii, and Xbox 360 game boxes. These units are specifically designed to drastically and directly cool these games. They attach directly to the vents of the units and are even powered by the unit's USB ports.